



Application Note

AN_385

FTDI D3XX Driver Installation Guide

Version 1.0

Issue Date: 2015-09-02

The purpose of this application note is to provide users of FTDI chips with a simple procedure for installing FTDI D3XX Driver for FTDI 600 series devices used under Windows 7, 8, 8.1, 10 (for both 32 bit and 64 bit).

Use of FTDI devices in life support and/or safety applications is entirely at the user's risk, and the user agrees to defend, indemnify and hold FTDI harmless from any and all damages, claims, suits or expense resulting from such use.

Future Technology Devices International Limited (FTDI)

Unit 1, 2 Seaward Place, Glasgow G41 1HH, United Kingdom

Tel.: +44 (0) 141 429 2777 Fax: + 44 (0) 141 429 2758

Web Site: <http://ftdichip.com>

Copyright © 2015 Future Technology Devices International Limited

Table of Contents

1 Introduction	2
2 FTDI D3XX Driver	3
3 Installing D3XX Driver	4
3.1 Manual Installation	4
4 Uninstalling FTDI Devices.....	11
5 Contact Information	12
Appendix A.....	13
Acronyms and Abbreviations.....	13
Appendix B.....	14
List of Figures	14
Appendix C – Revision History	15

1 Introduction

The purpose of this application note is to provide users of FTDI chips with a simple procedure for installing FTDI D3XX driver for their FTDI 600 series devices under Windows.

This installation guide is only intended for the following versions of Windows (both 32 bit and 64 bit) –

- Windows 7
- Windows 8
- Windows 8.1
- Windows 10

2 FTDI D3XX Driver

FTDI provides a new USB driver called, D3XX, for its range of SuperSpeed USB ICs, such as the FT60X. D3XX implements a proprietary protocol different from D2XX in order to maximize USB 3.0 bandwidth.

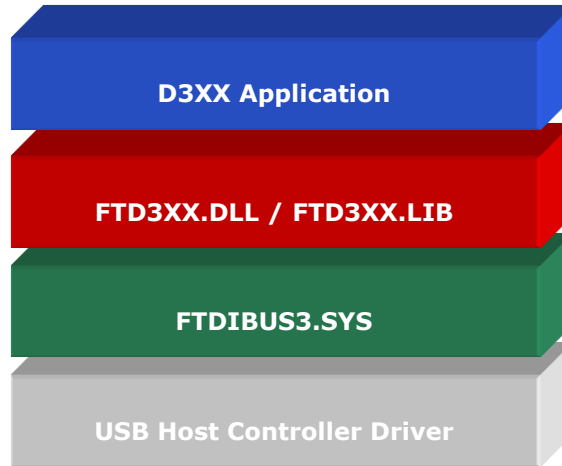


Figure 2.1 D3XX Driver Architecture

3 Installing D3XX Driver

To install D3XX drivers for an FTDI device under Windows 7, 8, 8.1 and 10, follow the instructions given below:

Connect the device to a spare USB port on your PC.

3.1 Manual Installation

If no suitable driver is automatically found via Windows Update, then user should manually install the driver. To manually install the driver, follow the procedure given below.

The D3XX Drivers may be downloaded from the following link –

<http://www.ftdichip.com/Drivers/D3XX.htm>

Press the **Windows Start** button to bring up the start menu and select **“Control Panel”**.

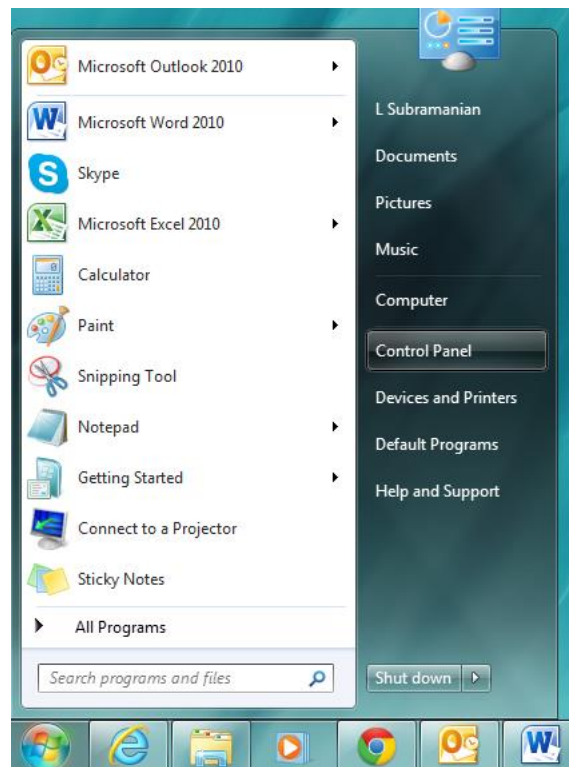


Figure 3.1 Windows Start Menu

From the **Control Panel** window select **"Device Manager"**.

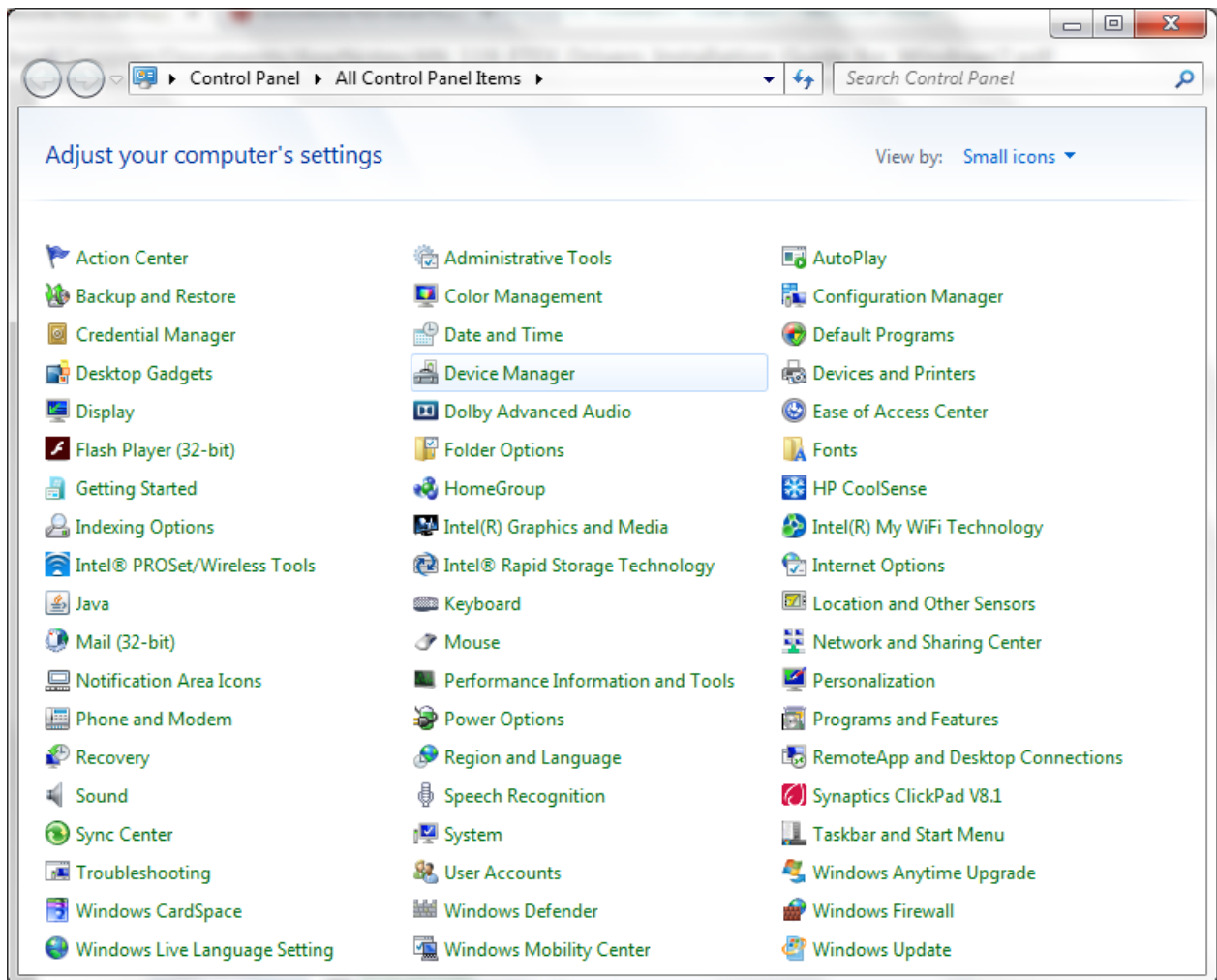


Figure 2.2 Device Manager Window

In the Device Manager window there will be a device under **Other Devices** with a yellow warning symbol to indicate a problem i.e. no driver installed. The text next to this device will depend on the device attached. In this example the device was a **FTDI SuperSpeed-FIFO Bridge**.

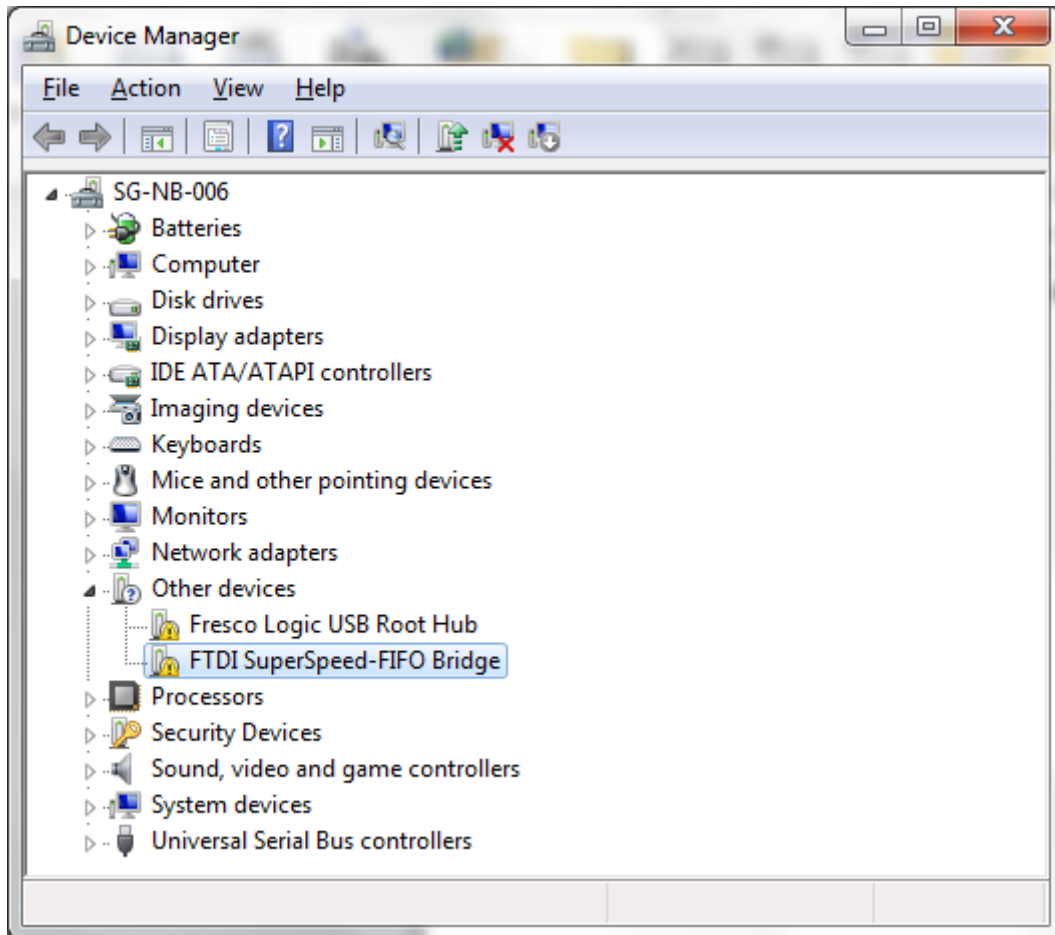


Figure 3.3 Device Manager Window with FTDI Device Driver Entry

Right click on the other device (FTDI SuperSpeed-FIFO Bridge in this example) to bring up a menu as shown below –

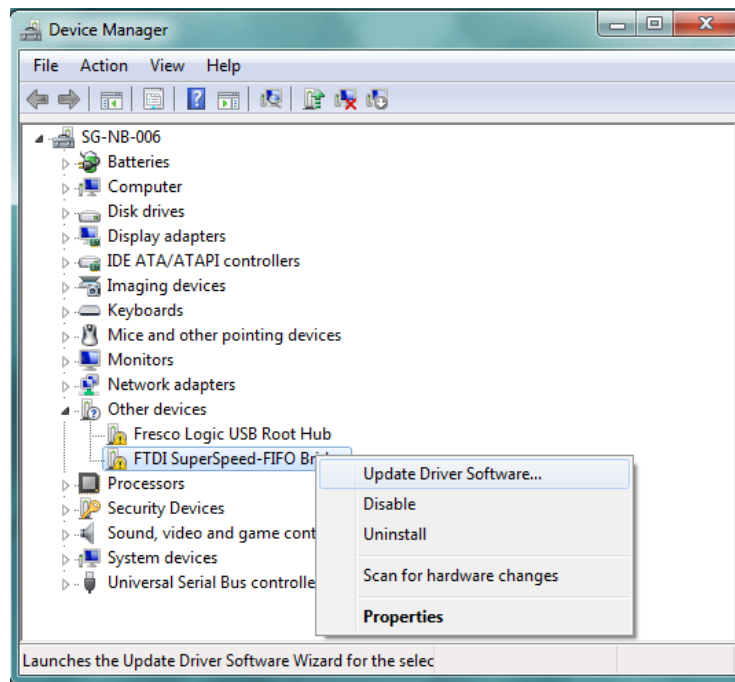


Figure 4.4 Device Manager Window > Update Driver Software Menu

From the displayed menu, select **“Update Driver Software...”**

This then displays the option for an automatic search or a manual search.

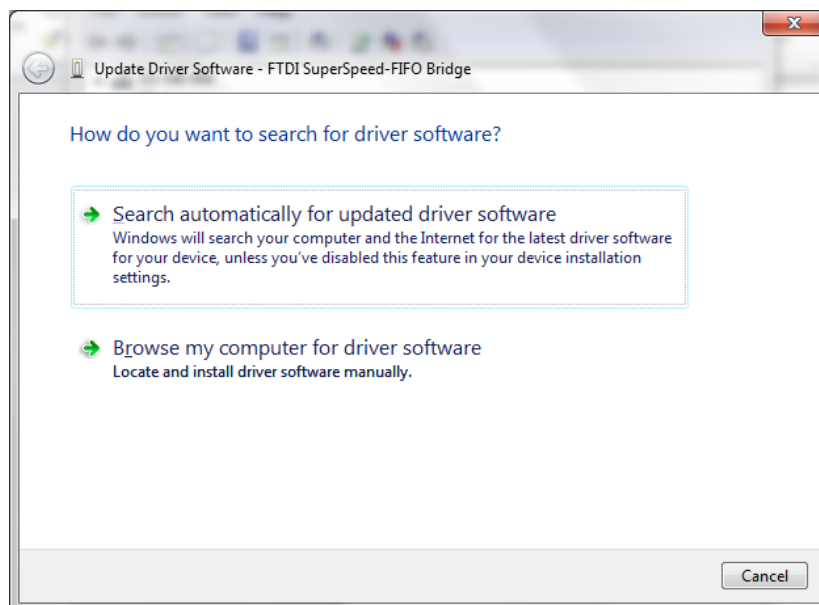


Figure 5.5 Update Driver Software Search Window

Select the second option to browse manually.

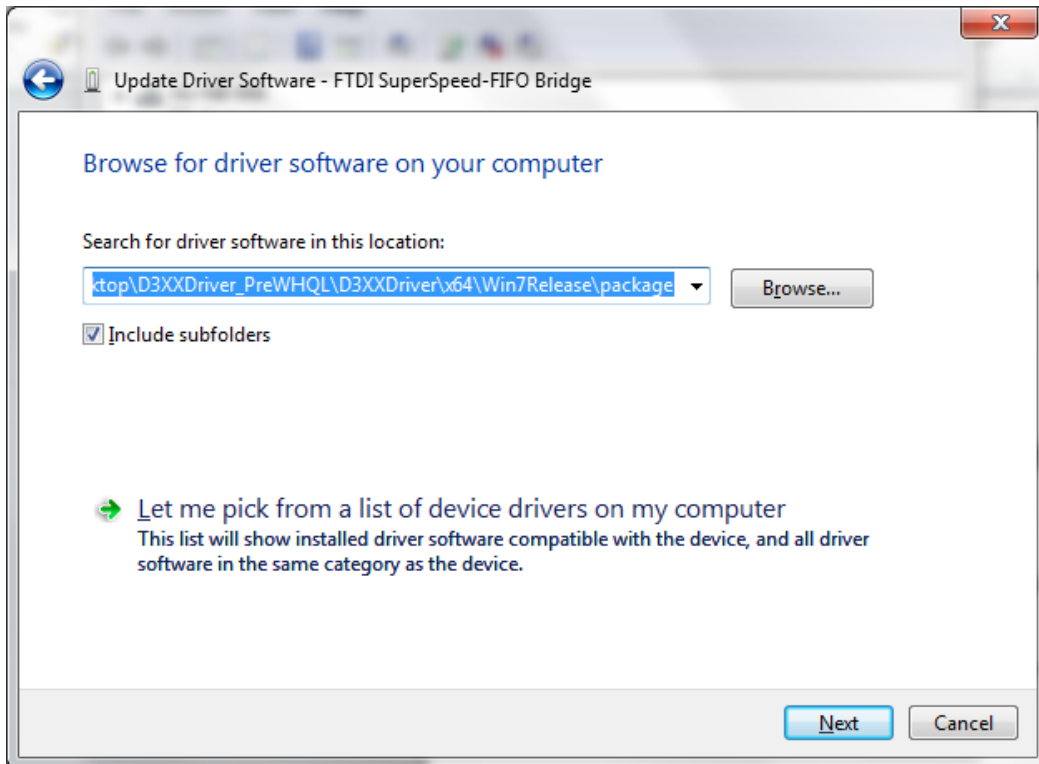
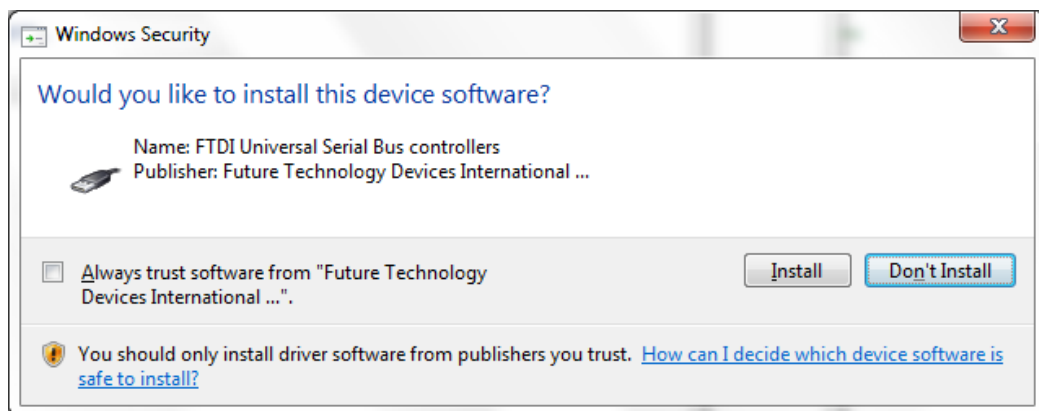


Figure 6.6 Update Driver Software > Manual Location Selection

In the address box put the exact location where the drivers have been saved to. This may be on a CD or in a folder on the PC. It is not necessarily the exact same location as shown in the screenshot. The drivers could have been saved anywhere of the users choice. Upon entering the address, click **"NEXT"** to start the installation.

A "Windows Security" dialog box may be displayed. Click **Install** to proceed with the installation.



The installation progress bar is displayed.

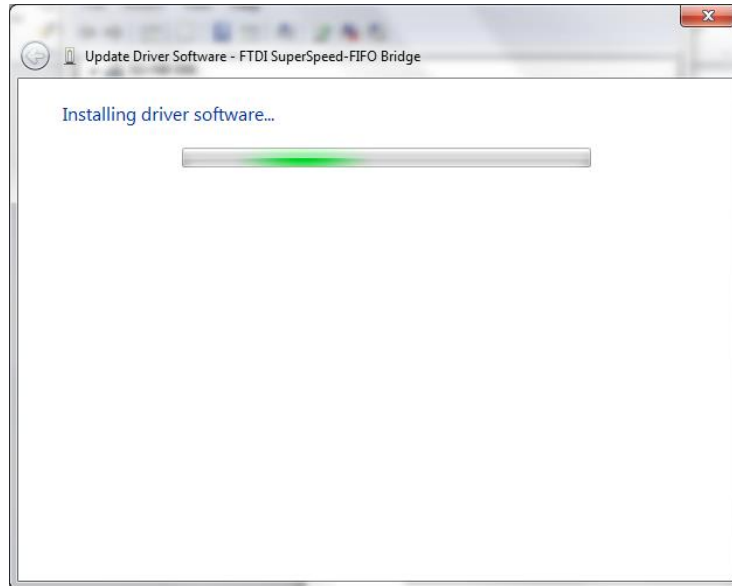


Figure 8.8 FTDI D3XX Driver Installation Progress Bar

Upon successful installation, a window indicating the same is displayed.

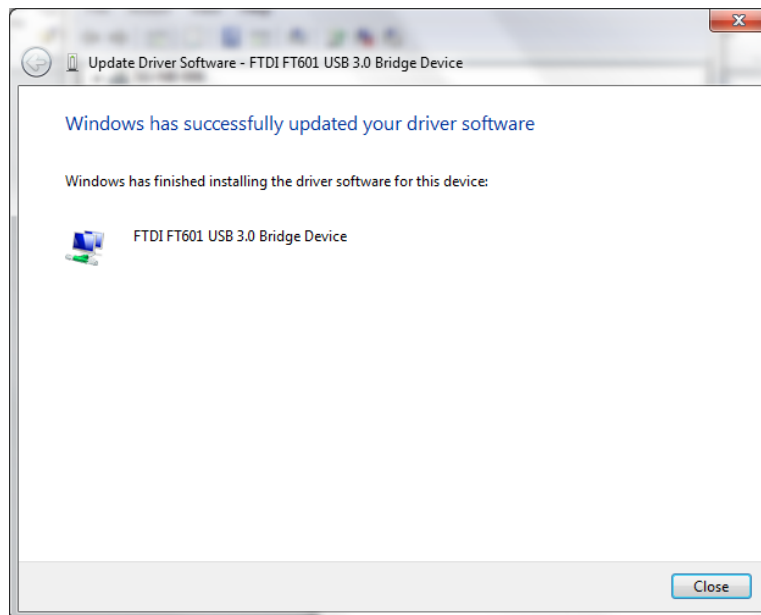


Figure 9.9 FTDI D3XX Driver Installations Complete Message Window

Click on the **Close** button to go back to the Device Manager window.

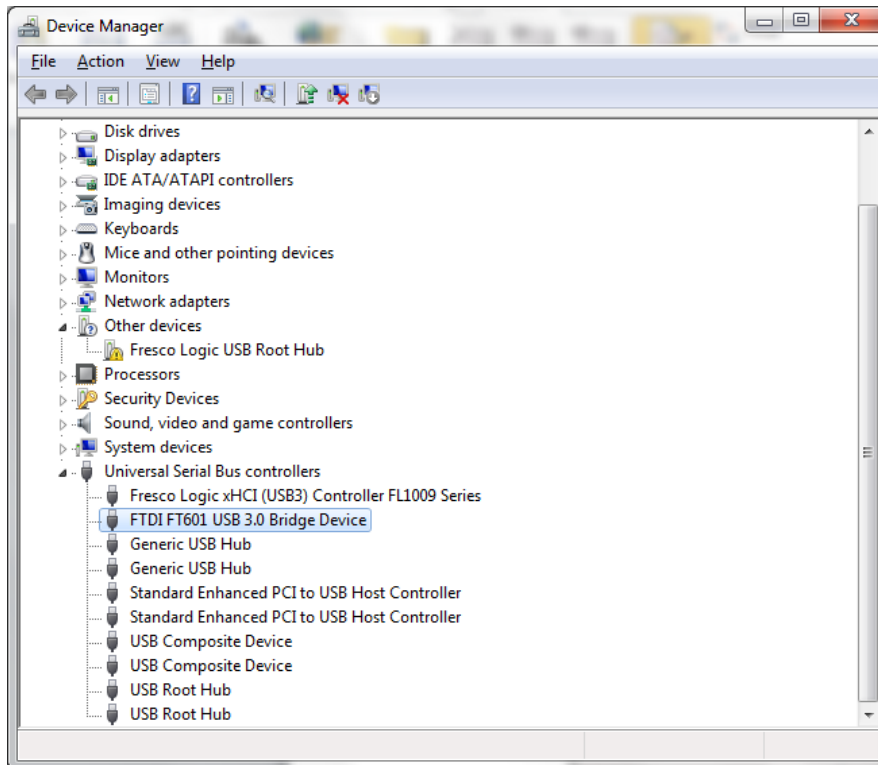


Figure 10.10 Device Manager Window with updated FTDI D3XX Driver entry

This time the Device Manager does not display the "FTDI SuperSpeed-FIFO Bridge" under "Other devices". Instead an entry for **FTDI FT601 USB 3.0 Bridge Device** under "Universal Serial Bus controllers" is shown, which indicates that the installation is successful. The device is now ready for use.

4 Uninstalling FTDI Devices

The following procedure should be followed for removing FTDI drivers from the Windows PC.

From the Device Manager window, right click on the **FTDI FT601 USB 3.0 Bridge Device** to bring up a menu as shown below –

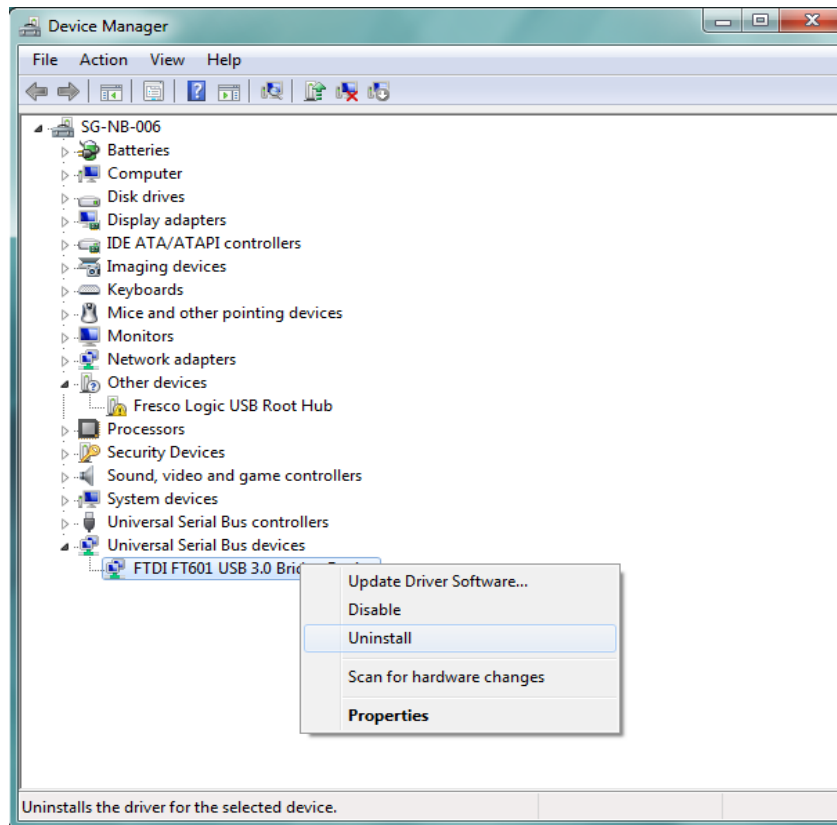


Figure 11.1 Device Manager Window > FTDI Driver Uninstall Menu

From the displayed menu, select **“Uninstall”**. This will delete the associated registry entries for that device only. Windows provides an automatic method to delete driver files via a checkbox to “Delete the driver software for this device” on the uninstall dialog box.



Figure 12.2 FTDI Driver Uninstallation Confirmation Dialog Box

5 Contact Information

Head Office – Glasgow, UK

Future Technology Devices International Limited
Unit 1, 2 Seaward Place, Centurion Business Park
Glasgow G41 1HH
United Kingdom
Tel: +44 (0) 141 429 2777
Fax: +44 (0) 141 429 2758

E-mail (Sales) sales1@ftdichip.com
E-mail (Support) support1@ftdichip.com
E-mail (General Enquiries) admin1@ftdichip.com

Branch Office – Tigard, Oregon, USA

Future Technology Devices International Limited
(USA)
7130 SW Fir Loop
Tigard, OR 97223-8160
USA
Tel: +1 (503) 547 0988
Fax: +1 (503) 547 0987

E-Mail (Sales) us.sales@ftdichip.com
E-Mail (Support) us.support@ftdichip.com
E-Mail (General Enquiries) us.admin@ftdichip.com

Branch Office – Taipei, Taiwan

Future Technology Devices International Limited
(Taiwan)
2F, No. 516, Sec. 1, NeiHu Road
Taipei 114
Taiwan, R.O.C.
Tel: +886 (0) 2 8791 3570
Fax: +886 (0) 2 8791 3576

E-mail (Sales) tw.sales1@ftdichip.com
E-mail (Support) tw.support1@ftdichip.com
E-mail (General Enquiries) tw.admin1@ftdichip.com

Branch Office – Shanghai, China

Future Technology Devices International Limited
(China)
Room 1103, No. 666 West Huaihai Road,
Shanghai, 200052
China
Tel: +86 21 62351596
Fax: +86 21 62351595

E-mail (Sales) cn.sales@ftdichip.com
E-mail (Support) cn.support@ftdichip.com
E-mail (General Enquiries) cn.admin@ftdichip.com

Web Site

<http://ftdichip.com>

Distributor and Sales Representatives

Please visit the Sales Network page of the [FTDI Web site](#) for the contact details of our distributor(s) and sales representative(s) in your country.

System and equipment manufacturers and designers are responsible to ensure that their systems, and any Future Technology Devices International Ltd (FTDI) devices incorporated in their systems, meet all applicable safety, regulatory and system-level performance requirements. All application-related information in this document (including application descriptions, suggested FTDI devices and other materials) is provided for reference only. While FTDI has taken care to assure it is accurate, this information is subject to customer confirmation, and FTDI disclaims all liability for system designs and for any applications assistance provided by FTDI. Use of FTDI devices in life support and/or safety applications is entirely at the user's risk, and the user agrees to defend, indemnify and hold harmless FTDI from any and all damages, claims, suits or expense resulting from such use. This document is subject to change without notice. No freedom to use patents or other intellectual property rights is implied by the publication of this document. Neither the whole nor any part of the information contained in, or the product described in this document, may be adapted or reproduced in any material or electronic form without the prior written consent of the copyright holder. Future Technology Devices International Ltd, Unit 1, 2 Seaward Place, Centurion Business Park, Glasgow G41 1HH, United Kingdom. Scotland Registered Company Number: SC136640

Appendix A

Acronyms and Abbreviations

Terms	Description
PC	Personal Computer
USB	Universal Serial Bus

Appendix B

List of Figures

Figure 2.1 D3XX Driver Architecture	3
Figure 3.1 Windows Start Menu	4
Figure 3.2 Device Manager Window	5
Figure 3.3 Device Manager Window with FTDI Device Driver Entry	6
Figure 3.4 Device Manager Window > Update Driver Software Menu	7
Figure 3.5 Update Driver Software Search Window.....	7
Figure 3.6 Update Driver Software > Manual Location Selection.....	8
Figure 3.7 Windows Security Dialog box.....	8
Figure 3.8 FTDI D3XX Driver Installation Progress Bar	9
Figure 3.9 FTDI D3XX Driver Installations Complete Message Window	9
Figure 3.10 Device Manager Window with updated FTDI D3XX Driver entry.....	10
Figure 4.1 Device Manager Window > FTDI Driver Uninstall Menu	11
Figure 4.2 FTDI Driver Uninstallation Confirmation Dialog Box	11

Appendix C – Revision History

Document Title: AN_385 FTDI D3XX Driver Installation Guide
Document Reference No.: FT_001229
Clearance No.: FTDI# ****
Product Page: <http://www.ftdichip.com/FTProducts.htm>
Document Feedback: [Send Feedback](#)

Revision	Changes	Date
1.0	Initial Release	2015-09-02