



Future Technology Devices International Ltd.

Application Note AN_128

User Guide For FT4232H Factory Test Utility

Document Reference No.: FT_000179

Version 1.0

Issue Date: 2009-10-20

This application note explains how to use the FT4232H factory test utility, FT4232_UART, which provides a user interface to program and test FTDI FT4232H devices.

Future Technology Devices International Limited (FTDI)

Unit 1,2 Seaward Place, Glasgow G41 1HH, United Kingdom
Tel.: +44 (0) 141 429 2777 Fax: + 44 (0) 141 429 2758
E-Mail (Support): support1@ftdichip.com Web: <http://www.ftdichip.com>
Copyright © 2009 Future Technology Devices International Limited

Table of Contents

1	Introduction	2
2	Hardware Configuration	3
3	Utility Basics	5
3.1	Operation.....	6
4	Device EEPROM Parameters	10
4.1	Default EEPROM data	10
5	Definition of Error Messages	11
6	Contact Information.....	16
	Appendix A - Revision History.....	18

1 Introduction

The FT4232_UART program is intended for use in an FT4232H manufacturing test environment. It has a single button user interface and returns a simple pass or fail for USB - RS232 designs. The executable version is hard-coded for use with the default VID and PID. The FT4232H default VID/PID is 0403/6011. The source code for this program is provided on the FTDI website at the [C# Builder examples](#) page and can be built by VC# 2008. The test program also requires a special cable to operate correctly.

The features of FT4232_UART are:

1. Auto-detect FT4232H.
2. Support two testing methods: normal test (uses a RS232 Null cable) and special test (uses a special cable),check RI/DCD Pins
3. Selection test only or programming and testing.
4. Repeat test feature.
5. Support the test Port A and Port B or Test Port C and Port D

The FT4232_UART is available as a free download from the [Utilities](#) page of the [FTDI website](#).

2 Hardware Configuration

EEPROM Configuration:

The FT4232H device requires an external 93C46 EEPROMs organized in 16-bit words. It also supports the 93C56 and 93C66 EEPROMs organized in 16-bit words.

CABLE Configuration:

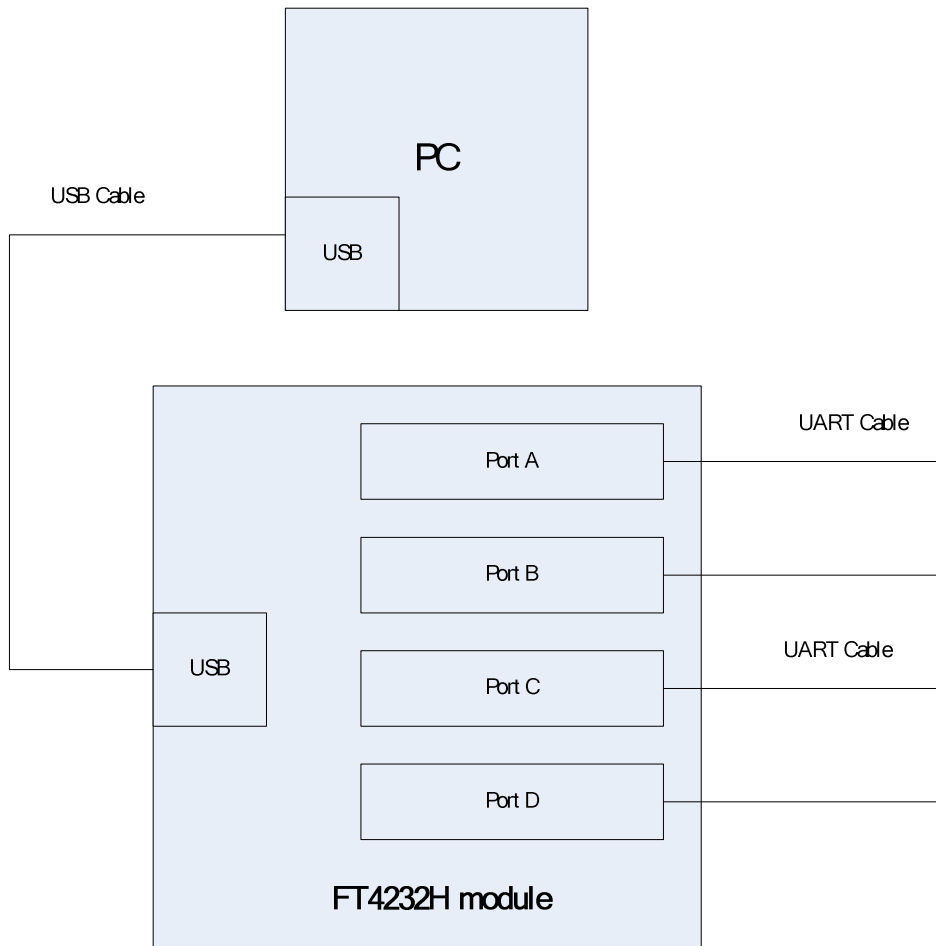
This utility supports two testing methods. Both require a cable to be manufactured. Users require to select one test method and manufacturing the appropriate cable. The following details the DB9 female connections for this cable:

1. Normal testing cable (RS232 Null cable):
 - DB9 female_1 Pin 3 (TXD) to DB9 female_2 Pin 2 (RXD)
 - DB9 female_1 Pin 2 (RXD) to DB9 female_2 Pin 3 (TXD)
 - DB9 female_1 Pin 7 (RTS) to DB9 female_2 Pin 8 (CTS)
 - DB9 female_1 Pin 8 (CTS) to DB9 female_2 Pin 7 (RTS)
 - DB9 female_1 Pin 6 (DSR) to DB9 female_2 Pin 4 (DTR)
 - DB9 female_1 Pin 5 (GND) to DB9 female_2 Pin 5 (GND)
 - DB9 female_1 Pin 4 (DTR) to DB9 female_2 Pin 6 (DSR)

2. Special testing cable:
 - DB9 female_1 Pin 3 (TXD) to DB9 female_2 Pin 2 (RXD)
 - DB9 female_1 Pin 2 (RXD) to DB9 female_2 Pin 3 (TXD)
 - DB9 female_1 Pin 7 (RTS) to DB9 female_2 Pin 8 (CTS)
 - DB9 female_1 Pin 8 (CTS) to DB9 female_2 Pin 7 (RTS)
 - DB9 female_1 Pin 6 (DSR) to DB9 female_2 Pin 4 (DTR)
 - DB9 female_1 Pin 5 (GND) to DB9 female_2 Pin 5 (GND)
 - DB9 female_1 Pin 4 (DTR) to DB9 female_2 Pin 6 (DSR)
 - DB9 female_1 Pin 1(DCD) short to DB9 female_1 Pin 6(DSR) and Pin 9 (RI)
 - DB9 female_2 Pin 1(DCD) short to DB9 female_2 Pin 6(DSR) and Pin 9 (RI)

Device connection configuration:

Use a USB cable to connect the FTDI device to a PC. Then prepare the RS232 null cable or special cable for COM port test. For simple COM Port testing, connect port A to port B and port C to port D. This connection is shown in the following diagram

**Figure 2-1 Connection configuration of Device Under Test**

3 Utility Basics

When the FT4232_UART utility is run then the following screen appears:

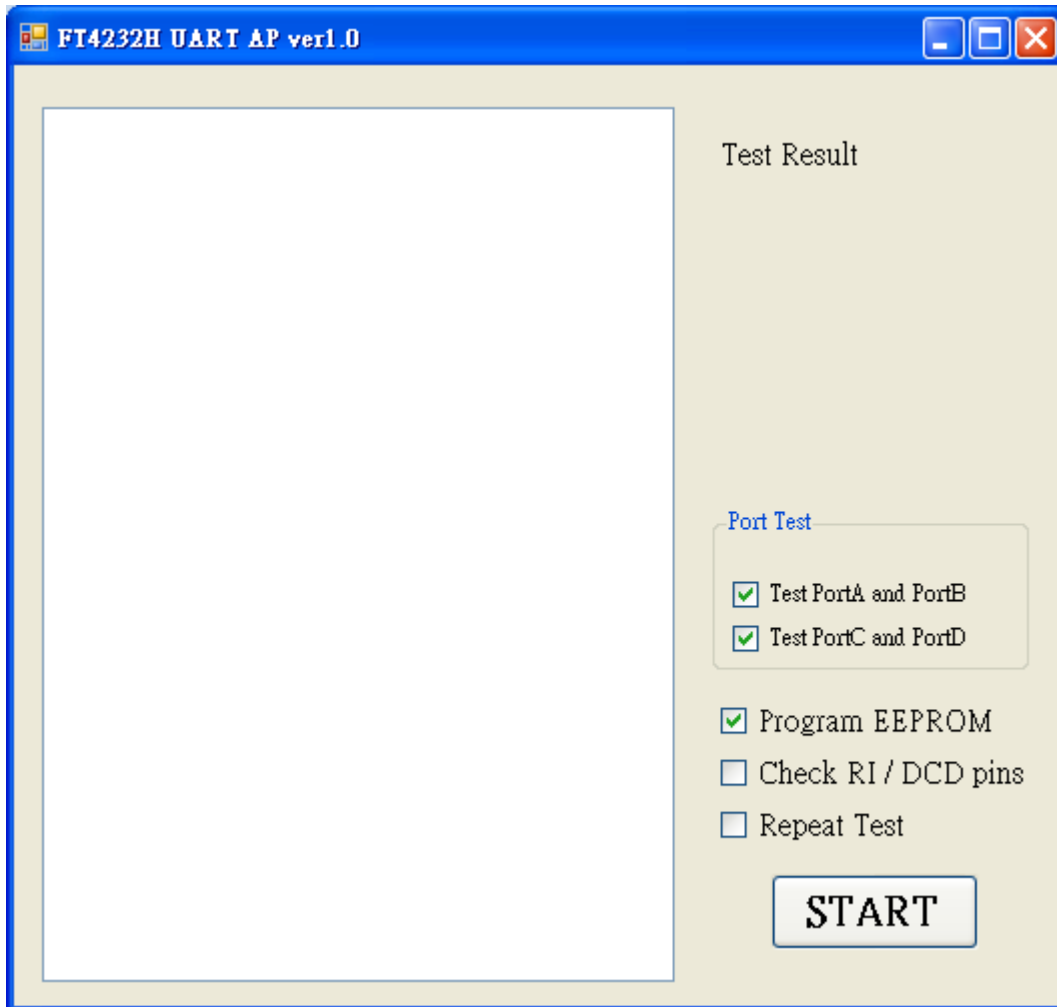


Figure 3-1 FT4232 Default GUI

The following sections explain how to use the GUI shown above.

3.1 Operation

The FT4232_UART has four functions:

Program EEPROM: users can enable or disable the program EEPROM function.

The following table describes the functions of this option:

Program EEPROM Test	Description of operation
Selected(default)	Update Default data to EEPROM
not selected	No update EEPROM

Table 3.1 EEPROM Data Selection switch

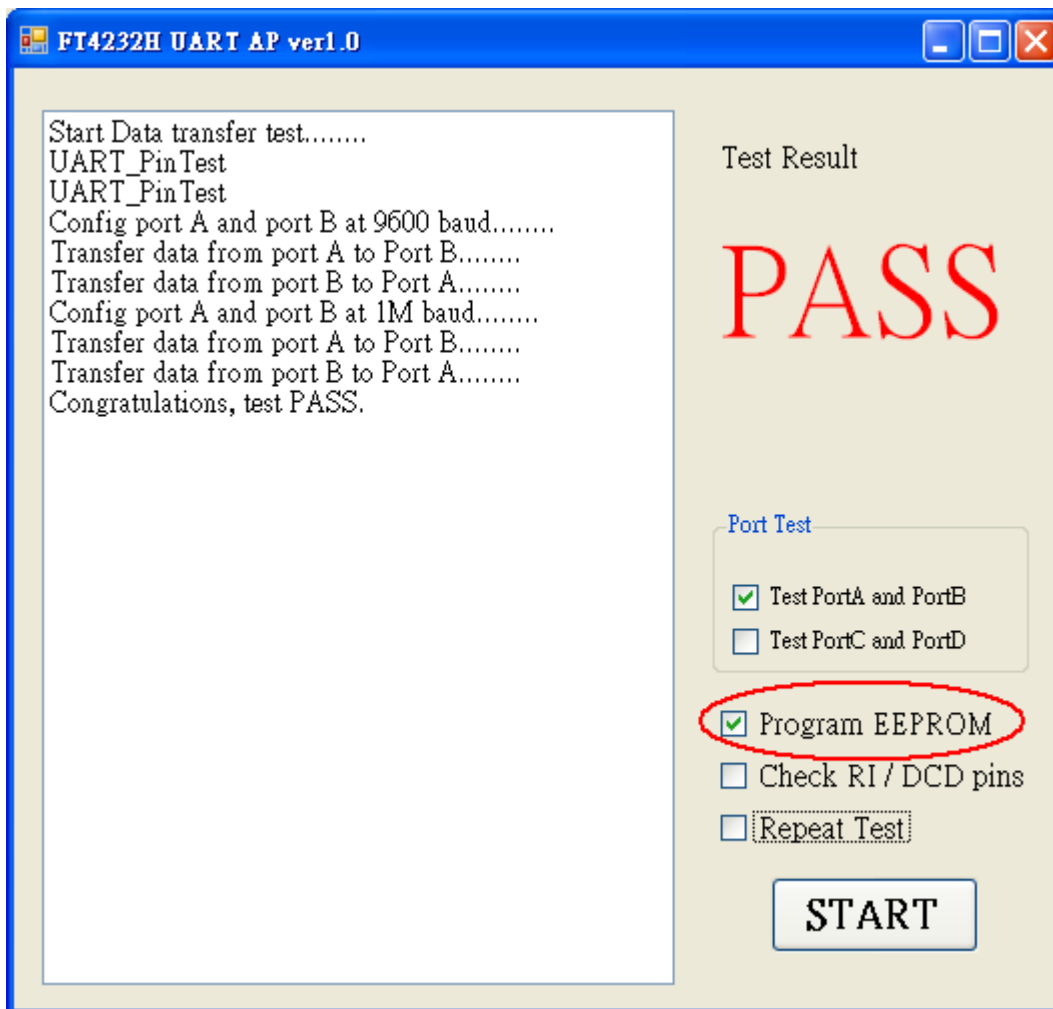


Figure 3-2 enable Program EEPROM

If "Program EEPROM" is not selected, then the RS232 function only is tested.

Check RI/DCD pins:

The default is that this is disabled. This means the utility is set to normal test mode. If enabled then this function puts the utility into a special test mode. This special test mode is a full test of all signals.

This function can be enabled/disabled using the "Check RI/DCD Pins" to change the testing methods.

Check RI/DCD Pins	Description
not selected(default)	It means utility set on normal mode. Please using RS232 null cable that is defined the "Check RI/DCD pins" in disable for testing
selected	It means utility set on special test mode. Please using special cable that is defined the "Check RI/DCD pins" in enable for testing

Table 3.2 Test Method Selection switch

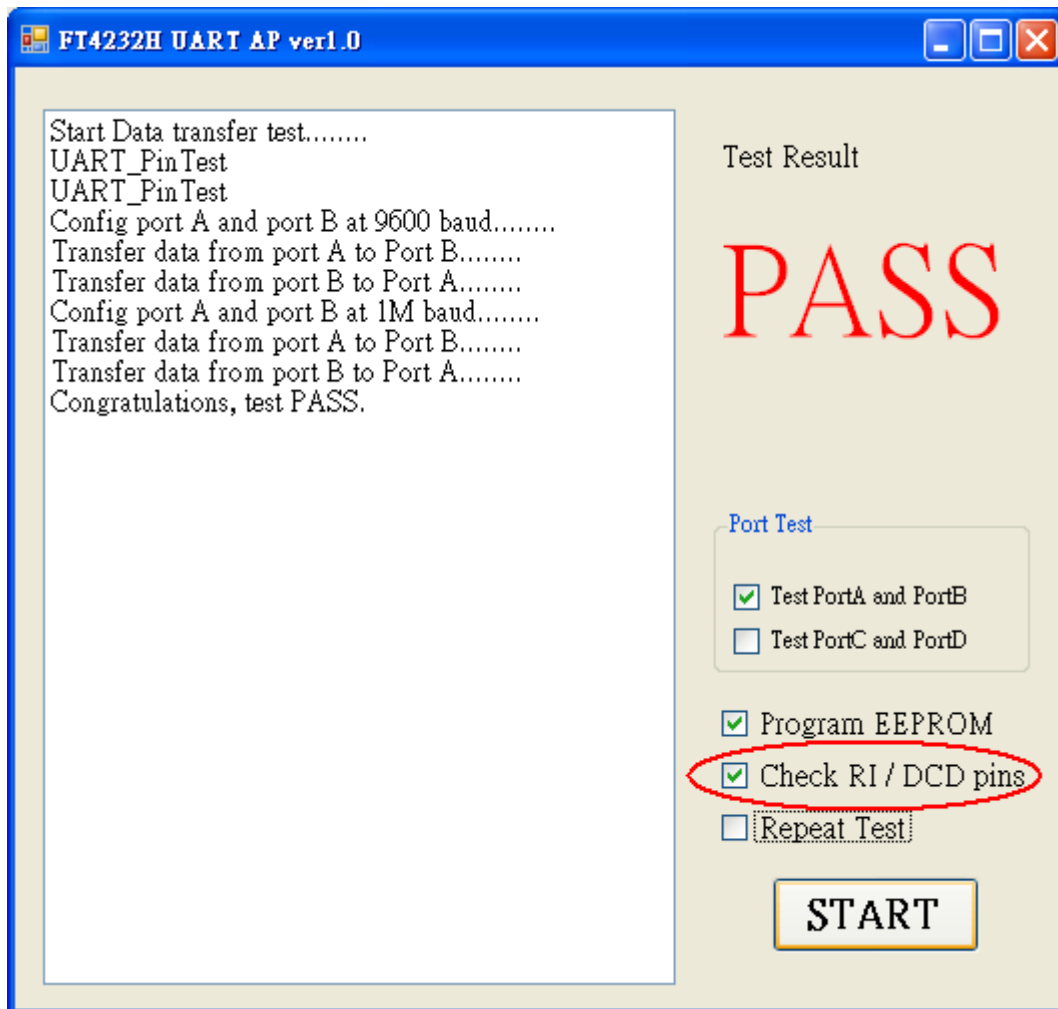


Figure 3-3 enable Check RI/DCD Pins

Repeat Test: if this function is enabled and "START" is pressed, then the utility will repeat the COM port data commutation testing. If this is not required then disable the "Repeat test" function.

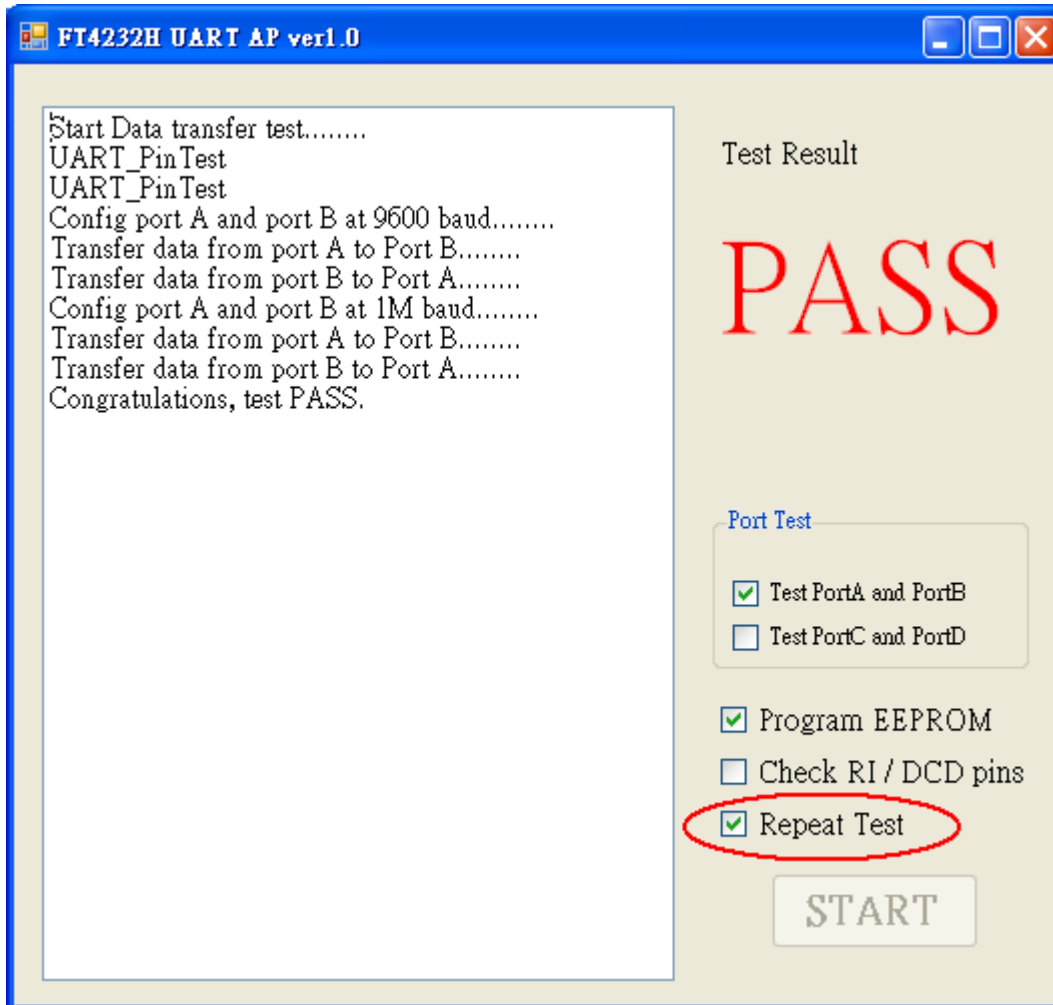


Figure 3-4 Enable Repeat test function

Port test selection: This option allows selection of which port to test.

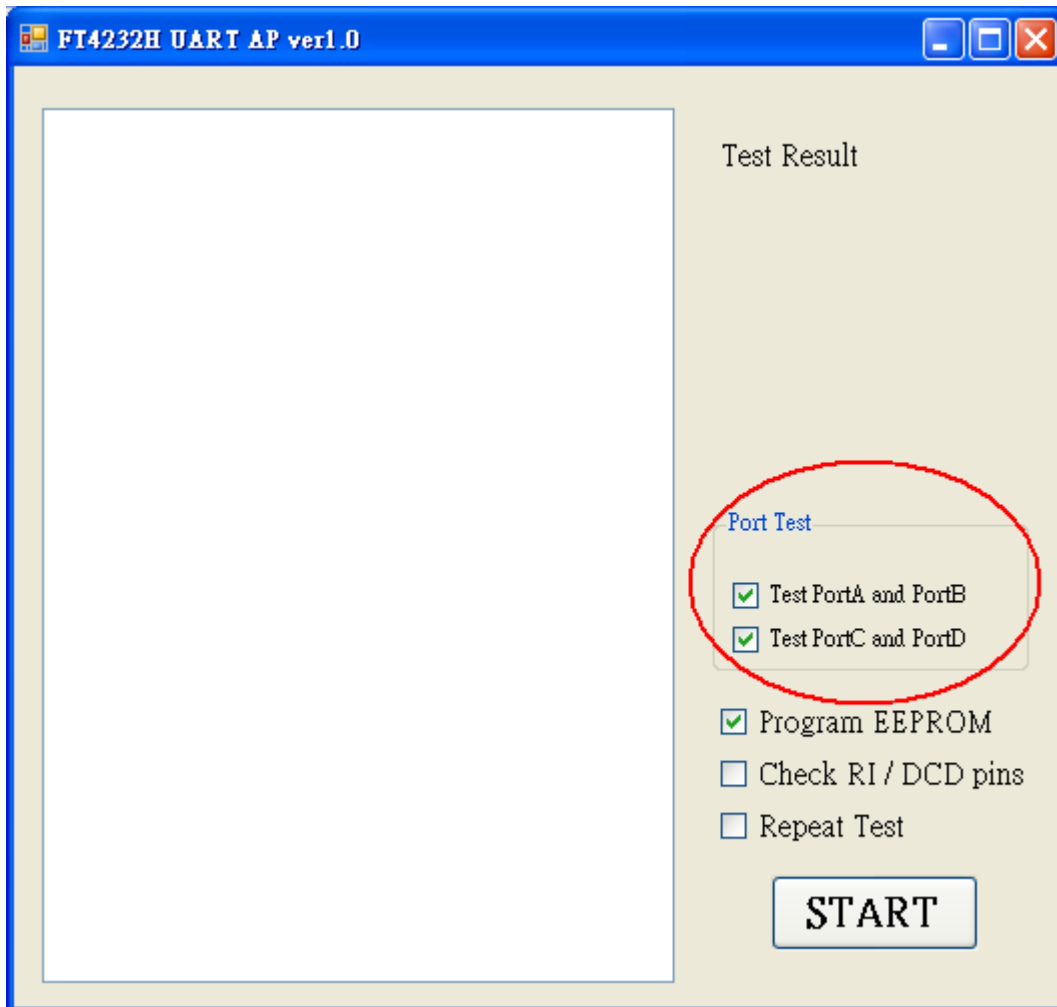


Figure 3-5 Port Test selection

4 Device EEPROM Parameters

The source code for this program is provided on the FTDI website at the [C# Builder examples](#) page and can be built by VC# 2008.

The subroutine WriteEEPROM() is available in file "Form1.cs". Its function is used to program the device external EEPROM.

The following sections explain which parameter can be modified using the file "Form1.cs".

4.1 Default EEPROM data

The default settings are as below:

// the EEPROM parameters below can be modified in the file "Form1.cs".

```
ee4232h.Description = "FT4232H Device";
```

```
ee4232h.Manufacturer = "FTDI";
```

```
ee4232h.ManufacturerID = "FT";
```

```
ee4232h.VendorID = 0x0403;
```

```
ee4232h.ProductID = 0x6011;
```

```
ee4232h.RemoteWakeUp = false;
```

```
ee4232h.SelfPowered = false;
```

```
ee4232h.SerialNumber = "FT" + GenSerialNo();//the default serial number is general by current  
time
```

5 Definition of Error Messages

The following section shows some error messages which may be displayed if issues occur. It also indicates possible reasons for the failure to help with factory debugging.

- If the PC cannot detect an FT4232H device, please check the device is connected to a PC and the [FTDI Driver](#) has been installed.

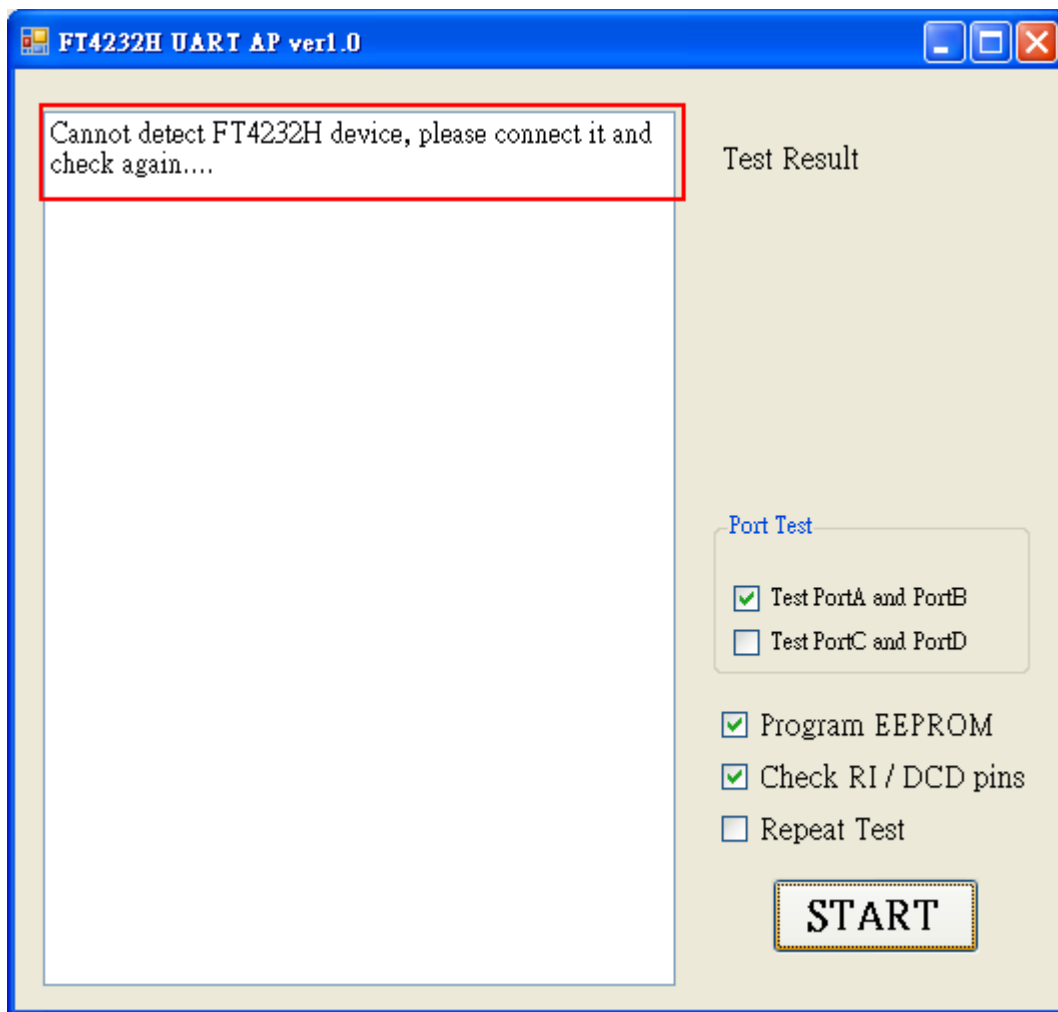


Figure 5-1 Failure message 1

- If the following message appears, then connect the device to a PC and wait the device to initialize, and press the "START" again.

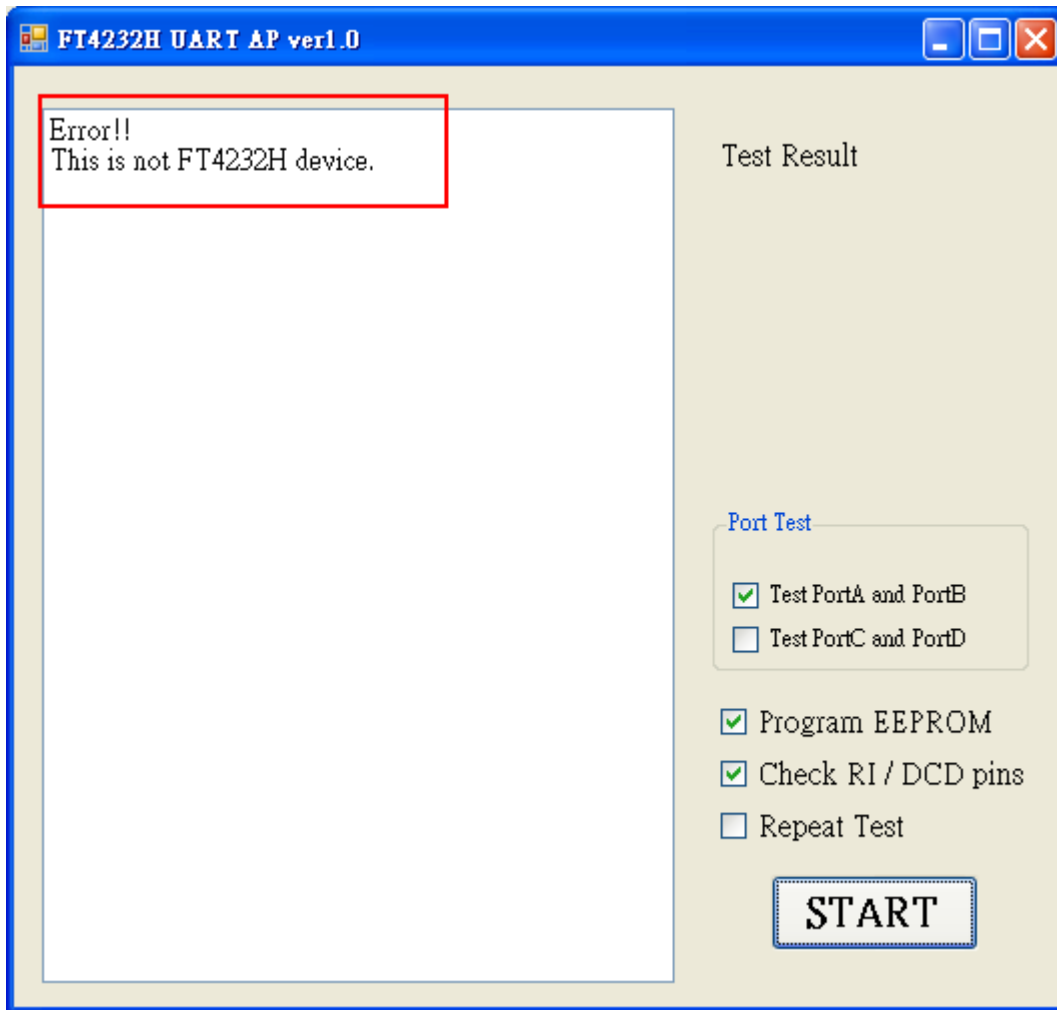


Figure 5-2 Failure message 2

- If the following message appears then check that the Null cable is connected correctly or check that the DSR signal schematic design under test.

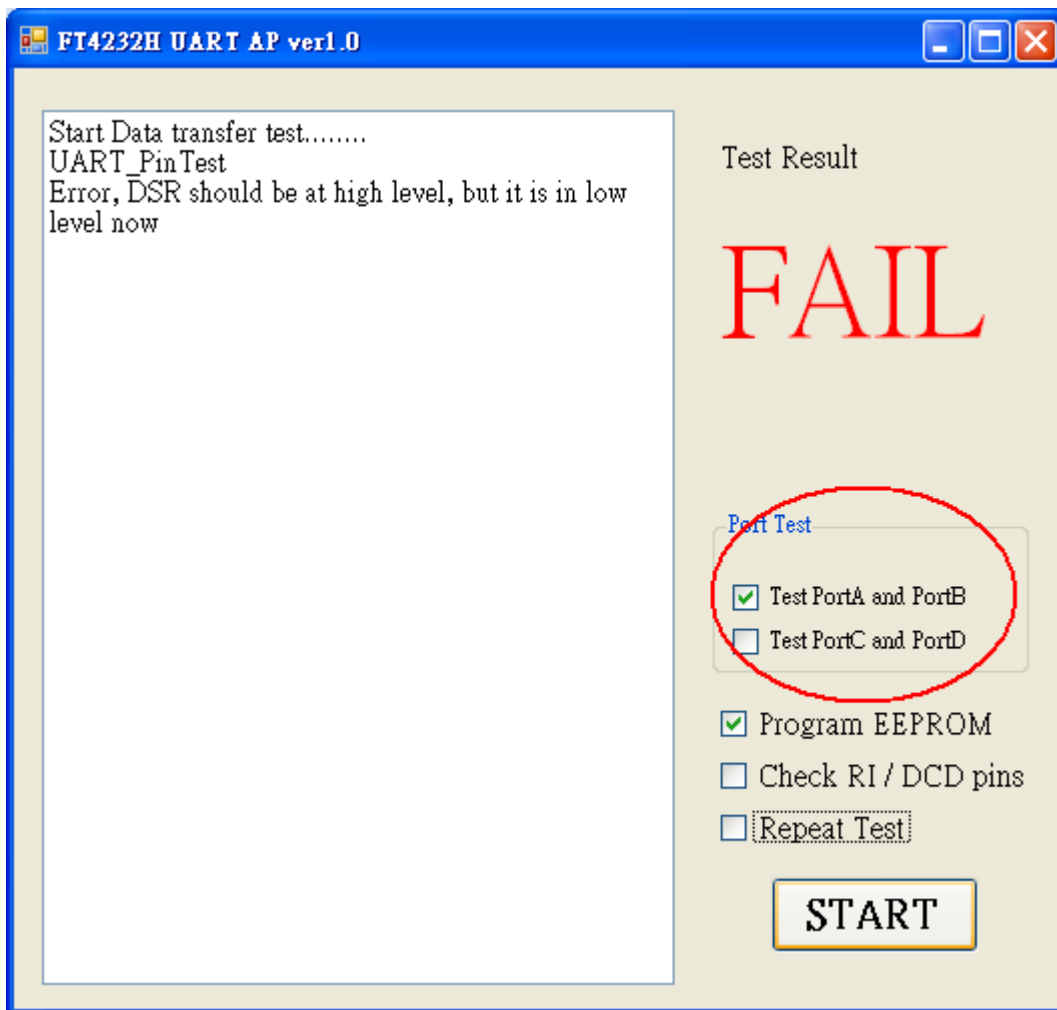


Figure 5-3 Failure message 3

- If the following message appears then check that the special cable is connected correctly or check the RI signal of the schematic design under test.

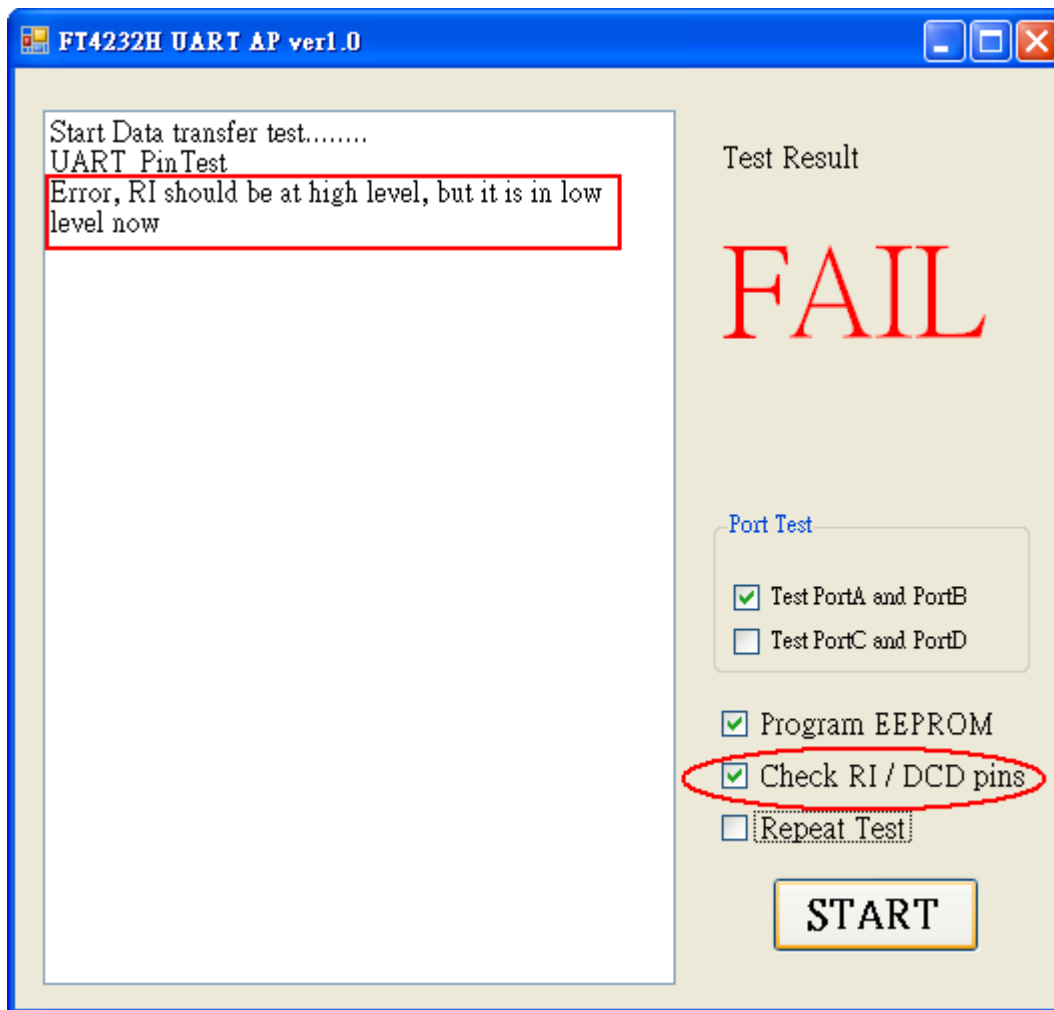


Figure 5-4 Failure message 4

- If the following message appears then check that the special cable is connected correctly or check the DCD signal of the schematic design under test.

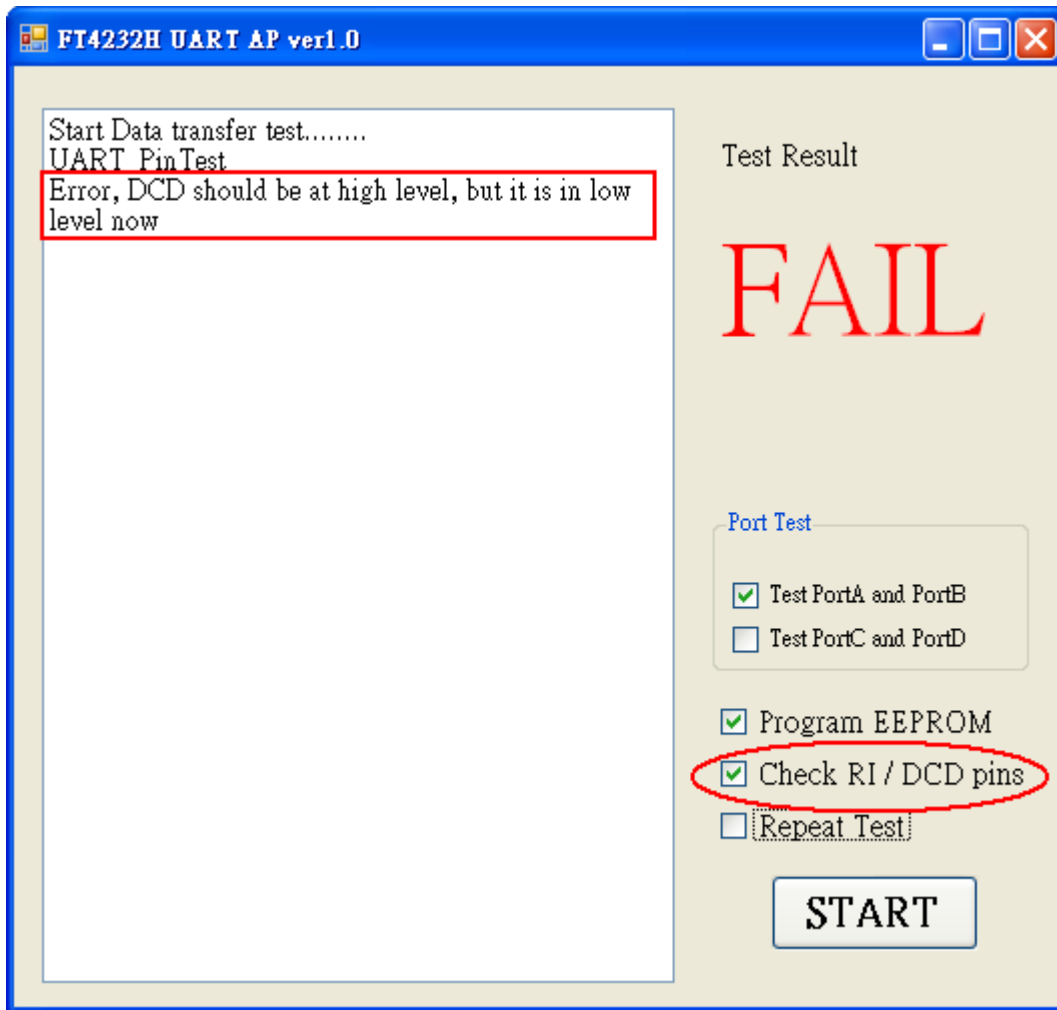


Figure 5-5 Failure message 5

- If the following message appears then go to <http://msdn.microsoft.com/en-us/netframework/default.aspx> to download the .NET Framework and install it.

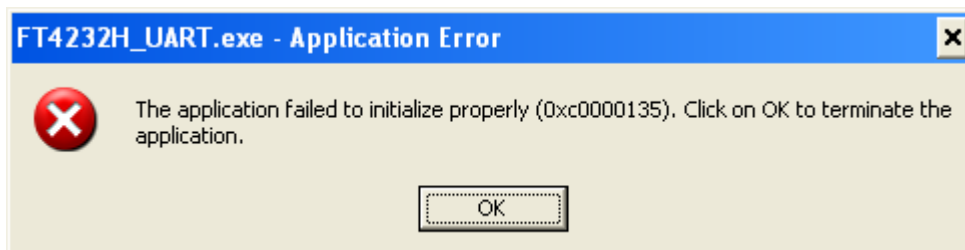


Figure 5-6 Failure message 6

6 Contact Information

Head Office – Glasgow, UK

Future Technology Devices International Limited
Unit 1,2 Seaward Place, Centurion Business Park
Glasgow G41 1HH
United Kingdom
Tel: +44 (0) 141 429 2777
Fax: +44 (0) 141 429 2758

E-mail (Sales) sales1@ftdichip.com
E-mail (Support) support1@ftdichip.com
E-mail (General Enquiries) admin1@ftdichip.com
Web Site URL <http://www.ftdichip.com>
Web Shop URL <http://www.ftdichip.com>

Branch Office – Taipei, Taiwan

Future Technology Devices International Limited (Taiwan)
2F, No. 516, Sec. 1, NeiHu Road
Taipei 114
Taiwan , R.O.C.
Tel: +886 (0) 2 8791 3570
Fax: +886 (0) 2 8791 3576

E-mail (Sales) tw.sales1@ftdichip.com
E-mail (Support) tw.support1@ftdichip.com
E-mail (General Enquiries) tw.admin1@ftdichip.com
Web Site URL <http://www.ftdichip.com>

Branch Office – Hillsboro, Oregon, USA

Future Technology Devices International Limited (USA)
7235 NW Evergreen Parkway, Suite 600
Hillsboro, OR 97123-5803
USA
Tel: +1 (503) 547 0988
Fax: +1 (503) 547 0987

E-Mail (Sales) us.sales@ftdichip.com
E-Mail (Support) us.admin@ftdichip.com
Web Site URL <http://www.ftdichip.com>

Branch Office – Shanghai, China

Future Technology Devices International Limited (China)
Room 408, 317 Xianxia Road,
Shanghai, 200051
China
Tel: +86 21 62351596
Fax: +86 21 62351595

E-mail (Sales) cn.sales@ftdichip.com
E-mail (Support) cn.support@ftdichip.com
E-mail (General Enquiries) cn.admin@ftdichip.com
Web Site URL <http://www.ftdichip.com>

Distributor and Sales Representatives

Please visit the Sales Network page of the FTDI Web site for the contact details of our distributor(s) and sales representative(s) in your country.

Vinculum is part of Future Technology Devices International Ltd. Neither the whole nor any part of the information contained in, or the product described in this manual, may be adapted or reproduced in any material or electronic form without the prior written consent of the copyright holder. This product and its documentation are supplied on an as-is basis and no warranty as to their suitability for any particular purpose is either made or implied. Future Technology Devices International Ltd will not accept any claim for damages howsoever arising as a result of use or failure of this product. Your statutory rights are not affected. This product or any variant of it is not intended for use in any medical appliance, device or system in which the failure of the product might reasonably be expected to result in personal injury. This document provides preliminary information that may be subject to change without notice. No freedom to use patents or other intellectual property rights is implied by the publication of this document. Future Technology Devices International Ltd, Unit 1, 2 Seaward Place, Centurion Business Park, Glasgow G41 1HH United Kingdom. Scotland Registered Number: SC136640

Appendix A - Revision History

Revision History

Version 1.0 First Release

20/10/2009