



**Future Technology Devices
International Ltd.**

Application Note AN_160

ComPort_Assignment Utility

User Guide

Document Reference No.: FT_000359

Version 1.0

Issue Date: 2010-11-23

This application note explains how to use the COMPort_Assignment Utility which provides a user interface to assign the COM Port numbers of FTDI devices.

Future Technology Devices International Limited (FTDI)

Unit 1,2 Seaward Place, Glasgow G41 1HH, United Kingdom
Tel.: +44 (0) 141 429 2777 Fax: + 44 (0) 141 429 2758
E-Mail (Support): support1@ftdichip.com Web: <http://www.ftdichip.com>
Copyright © 2010 Future Technology Devices International Limited

Use of FTDI devices in life support and/or safety applications is entirely at the user's risk, and the user agrees to defend, indemnify and hold harmless FTDI from any and all damages, claims, suits or expense resulting from such use.

Table of Contents

1	Introduction	2
2	Downloading COMPort_Assignment Utility	3
3	Assigning Devices COM Port Numbers	4
4	Error Messages.....	6
4.1	No Device Found	6
4.2	Devices Are Not Currently Connected to the PC	6
5	Contact Information	7
	Appendix A – List of Figures.....	9
	Appendix B – Revision History	10

1 Introduction

COMPort_Assignment is a utility which is used for assigning the COM Port numbers of FTDI devices. The utility is available as a free download from the [Utilities](#) page of the [FTDI website](#).

2 Downloading COMPort_Assignment Utility

The latest version of COMPort_Assignment utility can be downloaded from [Utilities](#) page of the [FTDI website](#) in a zipped executable file.

Extract the file using an extraction tool. There are many available on the web such as Winzip or WinRAR. Later versions on Windows e.g. XP comes with these utilities pre-loaded.

3 Assigning Devices COM Port Numbers

- Run the executable file by double clicking on it and the following screen will appear:

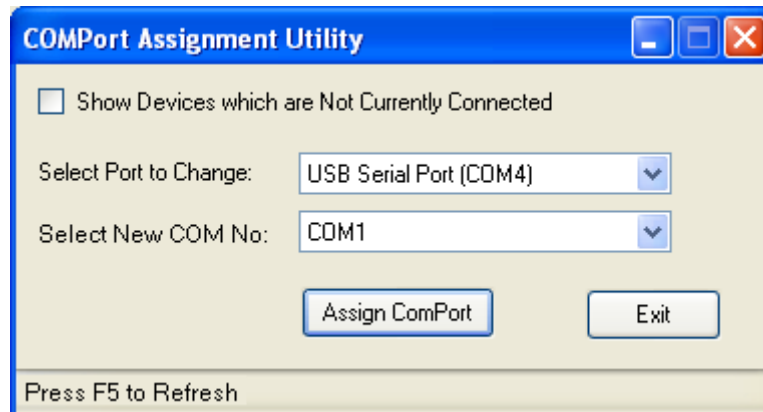


Figure 3.1 Running COMPort_Assignment Utility

Select a device's COM Port (for example USB Serial Port COM5) from a dropdown box labelled **Select Port to Change** (see Figure 3.2). The **Select Port to Change dropdown box** lists all FTDI USB devices serial COM ports. If the **Show Devices which Are Not Currently Connected box** is checked, devices that are installed but are not currently connected to the PC will be displayed in the **Select Port to Change dropdown box**.

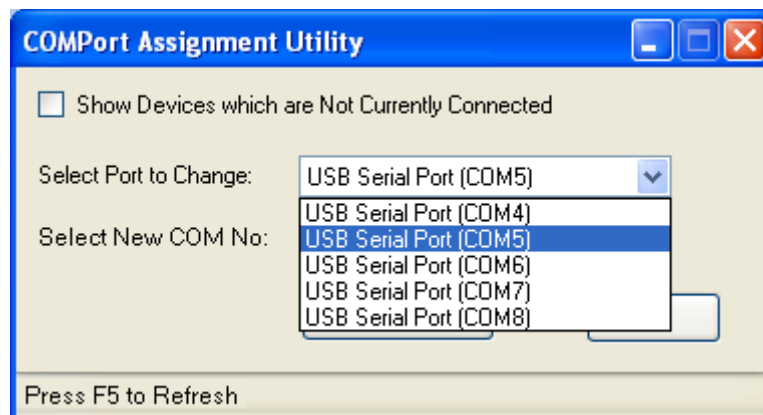


Figure 3.2 Selecting Device's COM Port

Note: Please press **F5** to refresh if any changes are made while COMPort_Assignment utility is running.

- Select a free COM Port number (for example COM9) from the dropdown box labelled **Select New COM No** (see Figure 3.3). The **Select New COM No dropdown box** lists all free COM Ports numbers available.

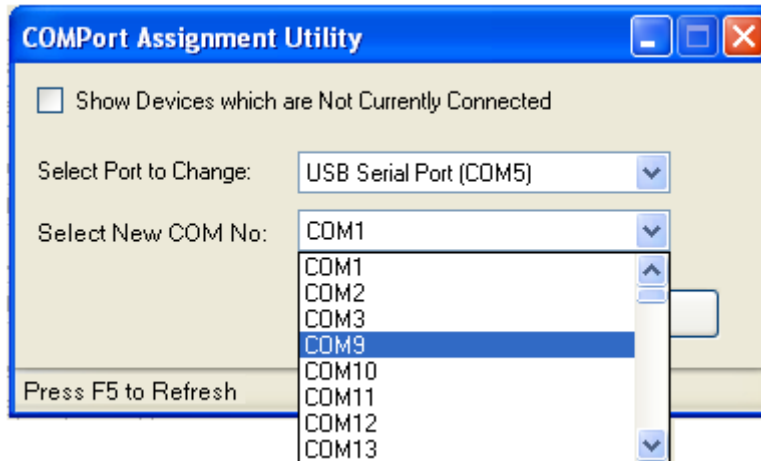


Figure 3.3 Selecting Device's COM Port Number

- When clicking **Assign ComPort button** (see Figure 3.4) to assign a device COM Port (USB Serial Port COM5) to an available free COM Port number (COM9), an **Assigning COMPort Number confirmation message screen** appears as shown in Figure 3.5

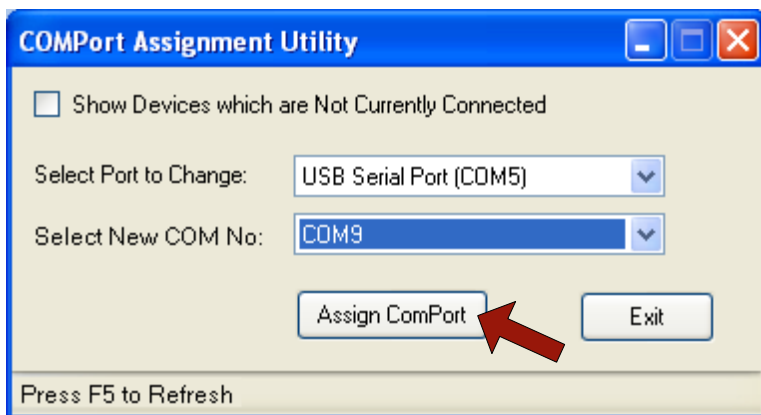


Figure 3.4 Assigning COM Port

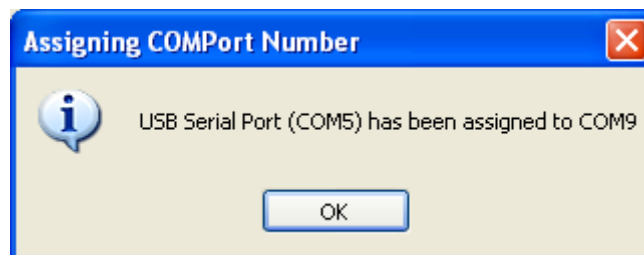


Figure 3.5 Assigning COMPort Number Confirmation Message

- Click **OK** to finish assigning the selected USB serial port device and a next USB serial port device can be assigned to an available free COM Port number.

4 Error Messages

4.1 No Device Found

This error can occur if the FTDI device drivers are not installed on the PC. Please plug in the FTDI devices to the PC and install the latest CDM drivers available from the [FTDI web site](#).

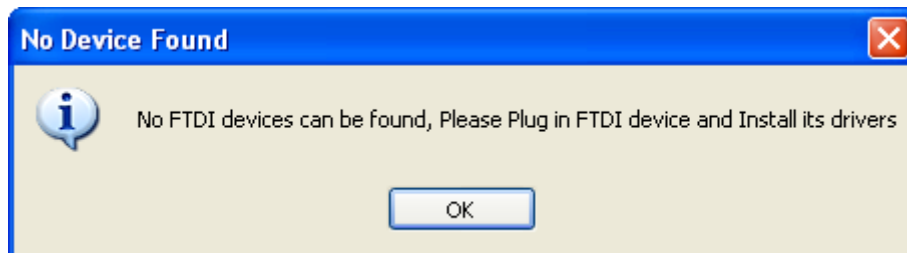


Figure 4.1 "No Device Found" Error Message

4.2 Devices Are Not Currently Connected to the PC

This error (see Figure 4.2) may appear when a user click **Assign COMPort button** while **Select Port to Change dropdown box** displays **Devices are not Currently Connected** (see Figure 4.3). Please check **Show Devices which Are Not Currently Connected box** to display all devices that are installed but are not currently connected to the PC.



Figure 4.2 "Devices are Not Currently Connected" Error Message

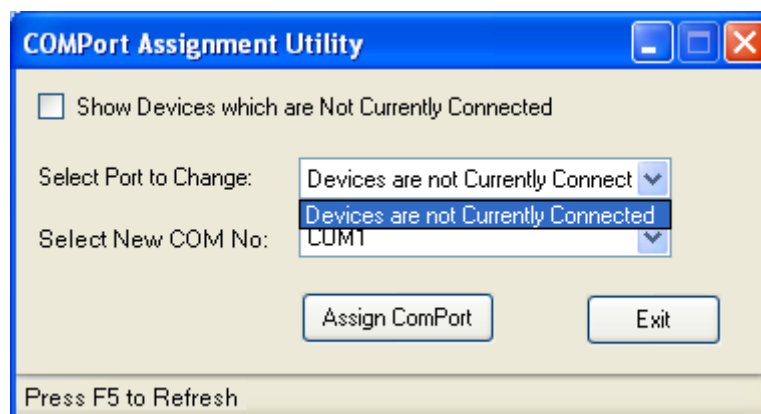


Figure 4.3 "Select Port to Change - Devices are Not Currently Connected"

5 Contact Information

Head Office – Glasgow, UK

Future Technology Devices International Limited
Unit 1, 2 Seaward Place, Centurion Business Park
Glasgow G41 1HH
United Kingdom
Tel: +44 (0) 141 429 2777
Fax: +44 (0) 141 429 2758

E-mail (Sales) sales1@ftdichip.com
E-mail (Support) support1@ftdichip.com
E-mail (General Enquiries) admin1@ftdichip.com
Web Site URL <http://www.ftdichip.com>
Web Shop URL <http://www.ftdichip.com>

Branch Office – Taipei, Taiwan

Future Technology Devices International Limited (Taiwan)
2F, No. 516, Sec. 1, NeiHu Road
Taipei 114
Taiwan, R.O.C.
Tel: +886 (0) 2 8791 3570
Fax: +886 (0) 2 8791 3576

E-mail (Sales) tw.sales1@ftdichip.com
E-mail (Support) tw.support1@ftdichip.com
E-mail (General Enquiries) tw.admin1@ftdichip.com
Web Site URL <http://www.ftdichip.com>

Branch Office – Hillsboro, Oregon, USA

Future Technology Devices International Limited (USA)
7235 NW Evergreen Parkway, Suite 600
Hillsboro, OR 97123-5803
USA
Tel: +1 (503) 547 0988
Fax: +1 (503) 547 0987

E-Mail (Sales) us.sales@ftdichip.com
E-Mail (Support) us.support@ftdichip.com
E-Mail (General Enquiries) us.admin@ftdichip.com
Web Site URL <http://www.ftdichip.com>

Branch Office – Shanghai, China

Future Technology Devices International Limited (China)
Room 408, 317 Xianxia Road,
Shanghai, 200051, China
Tel: +86 21 62351596
Fax: +86 21 62351595

E-mail (Sales) cn.sales@ftdichip.com
E-mail (Support) cn.support@ftdichip.com
E-mail (General Enquiries) cn.admin@ftdichip.com
Web Site URL <http://www.ftdichip.com>

Distributor and Sales Representatives

Please visit the Sales Network page of the FTDI Web site for the contact details of our distributor(s) and sales representative(s) in your country.

System and equipment manufacturers and designers are responsible to ensure that their systems, and any Future Technology Devices International Ltd (FTDI) devices incorporated in their systems, meet all applicable safety, regulatory and system-level performance requirements. All application-related information in this document (including application descriptions, suggested FTDI devices and other materials) is provided for reference only. While FTDI has taken care to assure it is accurate, this information is subject to customer confirmation, and FTDI disclaims all liability for system designs and for any applications assistance provided by FTDI. Use of FTDI devices in life support and/or safety applications is entirely at the user's risk, and the user agrees to defend, indemnify and hold harmless FTDI from any and all damages, claims, suits or expense resulting from such use. This document is subject to change without notice. No freedom to use patents or other intellectual property rights is implied by the publication of this document. Neither the whole nor any part of the information contained in, or the product described in this document, may be adapted or reproduced in any material or electronic form without the prior written consent of the copyright holder. Future Technology Devices International Ltd, Unit 1, 2 Seaward Place, Centurion Business Park, Glasgow G41 1HH, United Kingdom. Scotland Registered Company Number: SC136640

Appendix A – List of Figures

Figure 3.1 Running COMPort_Assignment Utility	4
Figure 3.2 Selecting Device’s COM Port.....	4
Figure 3.3 Selecting Device’s COM Port Number	5
Figure 3.4 Assigning COM Port.....	5
Figure 3.5 Assigning COMPort Number Confirmation Message.....	5
Figure 4.1 “No Device Found” Error Message.....	6
Figure 4.2 “Devices are Not Currently Connected” Error Message	6
Figure 4.3 “Select Port to Change - Devices are Not Currently Connected”	6

Appendix B – Revision History

Version 1.0	First release	23/11/10
--------------------	---------------	----------